

The Ashburn

5-bedroom detached home

The Ashburn is an impressive 5-bedroom home spread over three storeys. A spacious, open-plan kitchen and dining area allows plenty of space to spend time together, while the separate study and lounge offers extra room to relax. Added comforts include a master bedroom en-suite, built-in wardrobes in two bedrooms, and a large second-floor shower room.



Features

- Open plan kitchen and dining area looking out on landscaped rear garden
- Cloakroom, family bathroom, second-floor shower room and master bedroom en-suite
- Spacious separate lounge
- Study with French doors opening onto garden
- Stainless steel integrated double oven, microwave, hob, and extractor fan
- Built-in wardrobes in some bedrooms
- Double garage

Room Dimensions

Ground Floor

LOUNGE	4900 x 3510 mm	16'0" x 11'6"
KITCHEN / DINING	8200 x 2795 (min) mm 2910 (max) mm	26'10" x 9'2" 9'6"
UTILITY	2060 x 2050 mm	6'9" x 6'8"
STUDY	3510 x 3150 mm	11'6" x 10'5"
CLOAKROOM	1595 x 1150 mm	5'2" x 3'9"

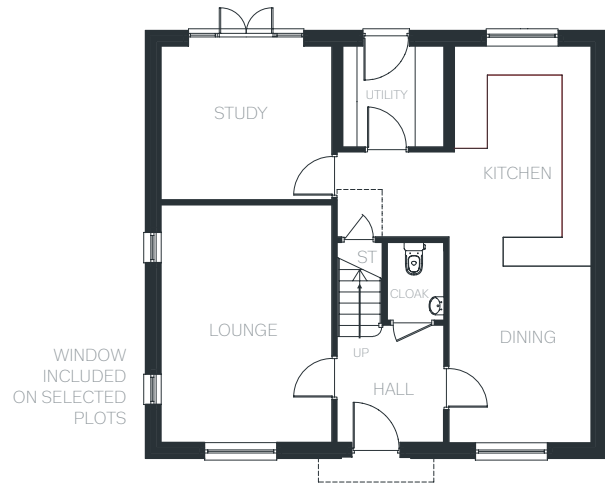
First Floor

BEDROOM 1	4615 x 2875 (min) mm 510 (max) mm	15'1" x 9'5" 11'6"
EN-SUITE	2405 (max) x 1720 (max) mm	7'10" x 5'7"
BEDROOM 2	2910 x 2603 (min) mm 3258 (max) mm	9'6" x 8'6" 10'8"
BEDROOM 3	2172 x 2125 (min) mm 2910 (max) mm	7'1" x 6'11" 9'6"
BATHROOM	2247 x 2175 mm	7'4" x 7'1"

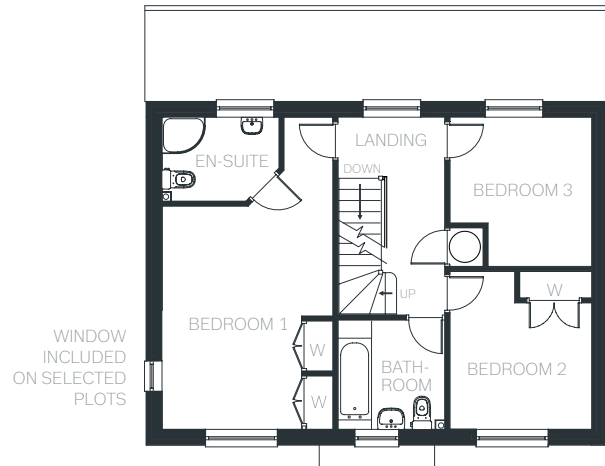
Second Floor

BEDROOM 4	3693 x 2925 mm (sloping ceiling)	12'1" x 9'7"
BEDROOM 5	5540 x 3525 mm (sloping ceiling)	18'2" x 11'6"
SHOWER ROOM	2925 x 2197 (max) mm (sloping ceiling) 1742 (min) mm	9'7" x 7'2" 5'8"

Ground Floor



First Floor



Second Floor

