

The Soar

4-bedroom detached home

Light pours through the front bay window of The Soar, a bright and spacious property with four bedrooms. A modern kitchen, lounge, cloakroom and utility room make up the ground floor, with French doors leading from the dining area out into the landscaped garden. On the upper floor a family bathroom, complete with bathtub, serves three of the bedrooms, while the master bedroom is equipped with an en-suite shower room and a built-in wardrobe.



Features

- Open plan kitchen/dining area opening out on to rear garden
- Modern kitchen and spacious lounge with bay window
- Cloakroom, family bathroom with bathtub, and master shower room
- Landscaped garden reached through French doors
- High quality Smeg kitchen appliances
- Stainless steel integrated oven, 4-ring hob and chimney hood extractor fan
- Built-in wardrobes in some bedrooms
- Single or double garage

Room dimensions

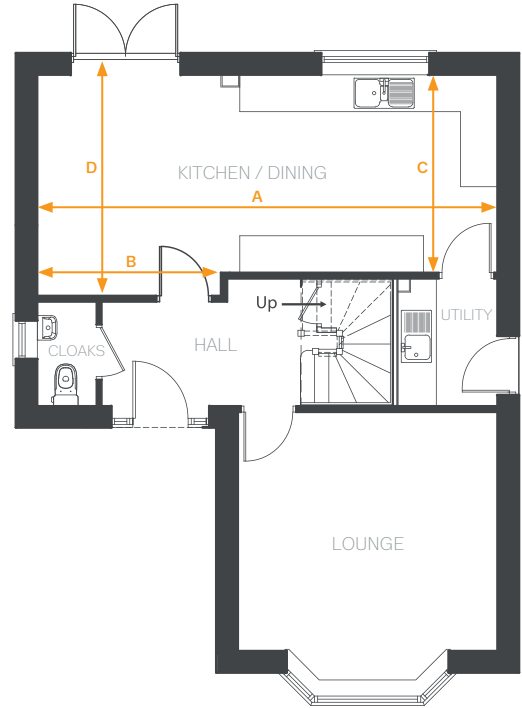
Ground Floor

LOUNGE	4130 x 3844 mm	13'6" x 12'7"
KITCHEN/DINING	Arrow A 7400 mm	24'3"
	Arrow B 2944 mm	9'7"
	Arrow C 3174 mm	10'3"
	Arrow D 3550 mm	11'7"
UTILITY	1542 x 1976 mm	5'11" x 6'5"
CLOAKROOM	887 x 1650 mm	2'10" x 5'4"

First Floor

BEDROOM 1	Arrow A 4130 mm	13'6"
	Arrow B 964 mm	3'1"
	Arrow C 3203 mm	10'6"
	Arrow D 3846 mm	12'7"
EN-SUITE	1965 x 2006 mm	6'5" x 6'7"
BEDROOM 2	2786 x 3176 mm	9'1" x 10'5"
BEDROOM 3	Arrow A 3108 mm	10'2"
	Arrow B 2351 mm	7'8"
	Arrow C 894 mm	2'11"
	Arrow D 3050 mm	10'
BATHROOM	1965 x 2033 mm	6'5" x 6'8"
BEDROOM 4	3108 x 2107 mm (max)	10'2" x 6'10"

Ground Floor



First Floor

