

The Dee

3-bedroom home

The Dee is a bright and spacious home for small families. A covered porch and hallway welcome you into the pretty 3-bedroom home, where you have access to a large separate lounge and an open-plan kitchen and dining area, which benefits from having French doors that open out onto the garden. A separate utility room provides some extra storage and a downstairs cloakroom completes the ground floor.

Upstairs you'll find two bedrooms, either of which would make a great home office space. They share a modern family bathroom with a bathtub and separate shower, while a large and luxurious principle bedroom with en-suite shower room offers the perfect escape.



Features

- *Open-plan kitchen and dining area looking out on rear garden*
- *Cloakroom, family bathroom, and principle bedroom en-suite shower room*
- *Spacious separate lounge*
- *Separate utility room*
- *High quality Smeg kitchen appliances*
- *Built-in wardrobes*
- *Private garden reached through French doors*
- *HIVE smart home system*
- *Garage*

Room dimensions

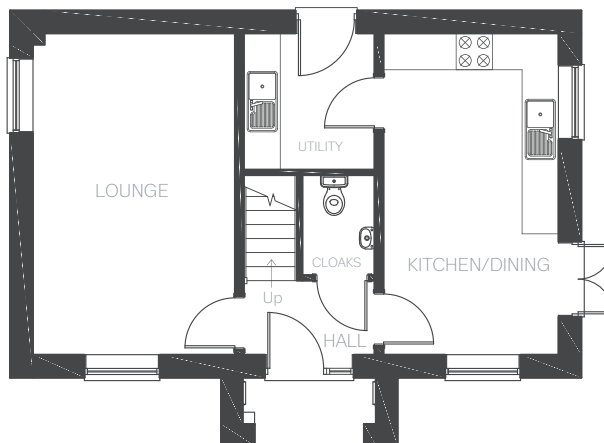
First Floor

Lounge	3338mm x 5310mm	10'11" x 17'5"
Kitchen / Dining	2890mm x 5310mm	9'5" x 17'5"
Utility	2158mm x 2250mm	7'0" x 7'4"
Cloakroom	190mm x 1650mm	3'10" x 5'4"

First Floor

Master bedroom	3385mm x 3517mm	11'1" x 11'6"
En-suite	2270mm x 1697mm	7'5" x 5'6"
Bedroom 2	2945mm x 3055mm	9'7" x 10'0"
Bedroom 3	2945mm x 2162mm	9'7" x 7'1"
Bathroom	2160mm x 1998(min)mm	7'1" x 6'6"

Ground Floor



First Floor

