

The Swindale

3-bedroom detached home

Designed with growing families in mind, the Swindale is full of thoughtful touches.

Downstairs, there's a spacious living room with a bay window looking out onto the front garden. Walk through into a modern open-plan kitchen and dining area and you'll find French doors that create a lovely bright and airy space and give you quick access to the garden, as well as a utility room for extra storage space and downstairs cloakroom.

Upstairs there's a generous principle bedroom with en-suite show room and walk-in wardrobes, as well as two further bedrooms with home office potential and a modern family bathroom with a separate shower.



Features

- Open-plan kitchen and dining area, opening out onto rear garden
- Spacious separate living room
- Utility room
- Cloakroom, family bathroom and principle bedroom en-suite shower room
- Private garden reached through French doors
- High quality Smeg kitchen appliances
- Built-in wardrobes
- Single garage
- HIVE smart home system

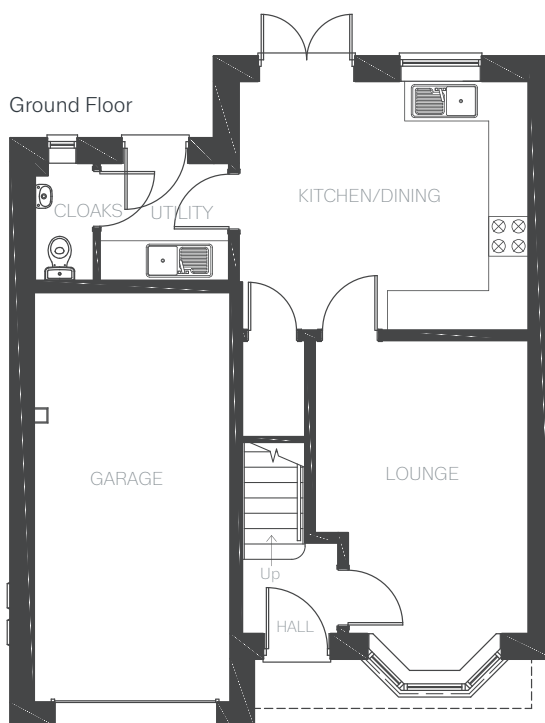
Room Dimensions

Ground Floor

LOUNGE	2725(min) x 4434mm 3225(max)	8'11" x 14'6" 10'6"
KITCHEN/DINING	4375 x 3764mm	14'4" x 12'4"
UTILITY	1950 x 1773mm	6'4" x 5'9"
CLOAKROOM	880 x 1773mm	2'10" x 5'9"

First Floor

BEDROOM 1	2923(min) x 4134mm	9'7" x 13'6"
EN-SUITE	1867 x 1664mm	6'1" x 5'5"
BEDROOM 2	3272 x 3844mm	10'8" x 12'7"
BEDROOM 3	4370 x 2309mm	14'4" x 7'6"
BATHROOM	2983 x 2130mm	9'9" x 6'11"



First Floor

