



The Nene

3 bedroom home

The Nene is a welcoming family home with an attractive front gable and porch.

Step inside and you'll find a bright ground floor, with an open plan dining kitchen and a spacious lounge, both looking out over the gardens. In the lounge we've also included French doors, perfect for stepping outside on relaxed summer weekends. There's also a useful utility room and cloakroom.

Upstairs, there's a luxurious principal bedroom with built-in wardrobe and en-suite, as well as two further bedrooms sharing a modern family bathroom.

Outside are turfed gardens, driveway and garage.



Features

- 17ft lounge with French doors to garden
- Open plan dining kitchen
- Useful utility room
- Principal bedroom with built in-wardrobe & en-suite
- Built-in wardrobe to bedroom two
- High quality kitchen appliances
- Hive smart heating system
- Fully turfed rear garden
- Garage

Room Dimensions

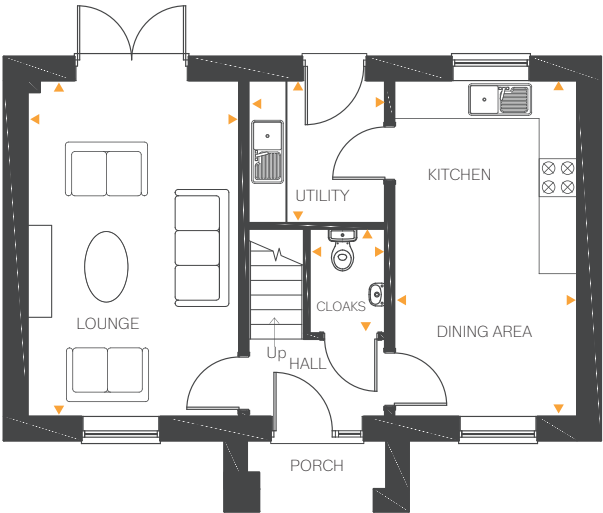
Ground Floor

Lounge	17'5" x 10'11"	5.31m x 3.33m
Kitchen/Dining	17'5" x 9'5"	5.31m x 2.89m
Utility	7'4" x 7'0"	2.25m x 2.15m
Cloakroom	5'4" x 3'8"	1.65m x 1.13m

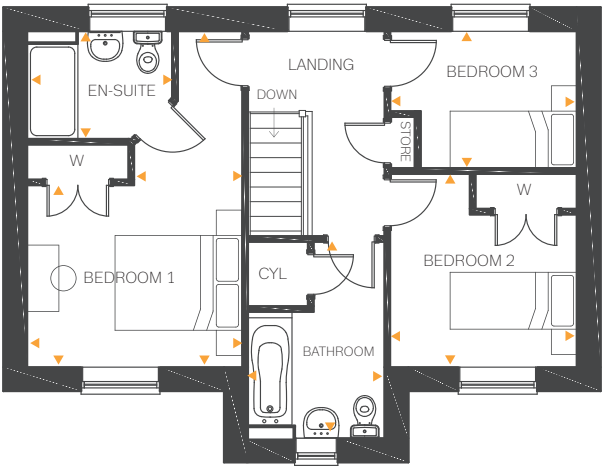
First Floor

Bedroom 1	17'5" (max) x 11'1" 5'11" (min)	5.31m (max) x 3.39m 1.81m (min)
En-suite	7'6" x 5'6"	2.28m x 1.70m
Bedroom 2	10'0" x 9'7"	3.05m x 2.94m
Bedroom 3	9'7" x 7'1"	2.94m x 2.16m
Bathroom	10'2" x 7'1"	3.10m x 2.16m

Ground Floor



First Floor



All drawings, plans, and images are for illustrative purposes only. Room measurements are approximate. Finishes and layouts may vary and, during the construction process, plans might be subject to change. For more information, speak to your sales consultant.