

THE WYE

THREE BEDROOM HOME



Step inside the Wye and you'll find an inviting lounge and open plan dining kitchen with French doors to the turfed rear garden, it's a light, bright, comfortable space, whether you're cooking for the family or hosting friends. A useful cloakroom finishes off the ground floor.

Upstairs feels just as light and bright. There is a spacious principal bedroom with built-in wardrobes, two further bedrooms and a modern family bathroom.

Outside there is a fully turfed garden and off road parking.

THE WYE

THREE BEDROOM HOME



Inviting lounge



Open plan dining kitchen with French doors to garden



Downstairs cloakroom



Principal bedroom with built-in wardrobes



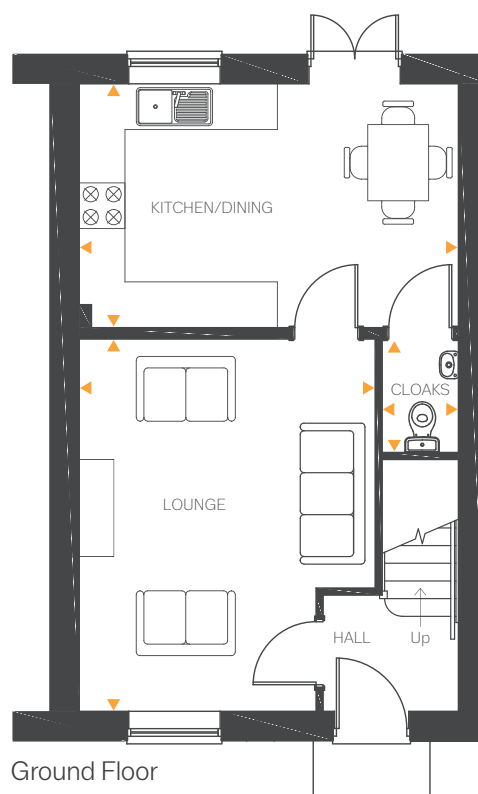
High quality kitchen appliances



Hive smart heating system



Fully turfed rear garden

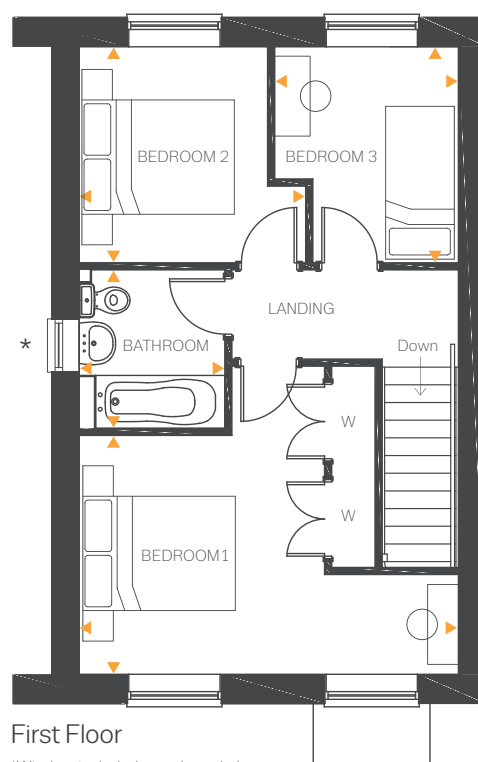


Ground Floor

Lounge	16'0" x 12'8"	4.88m x 3.88m
Kitchen/Dining	16'3" x 10'5"	4.97m x 3.20m
Cloakroom	5'3" x 3'1"	1.61m x 0.96m

First Floor

Bedroom 1	16'3" x 10'3"	4.97m x 3.13m
Bedroom 2	9'8" x 9'3"	2.97m x 2.83m
Bedroom 3	9'3" x 7'10"	2.83m x 2.41m
Bathroom	6'9" x 6'3"	2.07m x 1.91m



First Floor

*Window included on selected plots.