



# The Dunchurch

---

## 4 bedroom home

The Dunchurch is an attractive home designed for contemporary living. To the ground floor you will find an inviting lounge, cloakroom and an open plan dining kitchen which benefits from having French doors that open onto the garden, creating a light and airy living space with plenty of opportunities for al fresco dining during those warmer months.

The first floor, two of the bedrooms come complete with built-in wardrobes and en-suites, while two further bedrooms share a modern fitted family bathroom.

Outside are turfed gardens and a driveway leading to a garage.



## Features

- Open plan dining kitchen with French doors
- Inviting lounge
- Two of the four bedrooms have an en-suite & built-in wardrobes
- High quality Smeg kitchen appliances
- Hive smart heating system
- Fully turfed rear garden
- Garage

## Room Dimensions

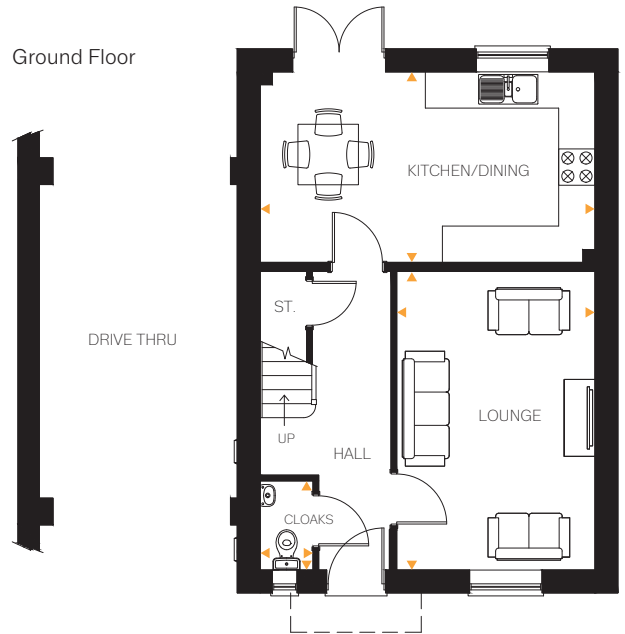
### Ground Floor

Lounge	16'2" x 10'8"	4.93m x 3.27m
Kitchen/Dining	18'1" x 10'4"	5.53m x 3.15m
Cloakroom	4'10" x 2'10"	1.47m x 0.87m

### First Floor

Bedroom 1	12'9" x 11'4"	3.89m x 3.47m
En-suite	9'7" x 3'3"	2.92m x 1.00m
Bedroom 2	17'5" x 10'6"	5.31m x 3.22m
Bedroom 3	11'4" x 10'4"	3.47m x 3.15m
Bedroom 4	8'6" x 8'4"	2.59m x 2.56m
En-suite	7'3" x 4'11"	2.23m x 1.50m
Bathroom	7'11" x 6'3"	2.41m x 1.90m

Ground Floor



First Floor

