

# THE SEATON

## FOUR BEDROOM HOME



The Seaton is perfect for busy families, at the heart of this generous home, there's a comfortable lounge and open plan dining kitchen with breakfast area, both rooms have French doors, so you can step straight out onto the garden, for relaxed weekends and get togethers. There's also a separate dining room, made for family dinners and entertaining, as well as a dedicated study, ideal for working from home. Like to use them for something different? Whether you need an extra family room, craft room or home gym, they're bright, flexible spaces you can make your own.

To the first floor, you'll find a principal bedroom with built-in wardrobes and en-suite. There's also three further bedrooms, all with built-in wardrobes and a family bathroom with bath and separate shower cubicle.

Outside are turfed gardens, driveway and double garage.

# THE SEATON

## FOUR BEDROOM HOME



Inviting lounge with French doors



Open plan dining kitchen with family area & French doors to garden



Useful study/extra family room



Downstairs cloakroom



Principal bedroom with built-in wardrobe & en-suite



High quality kitchen appliances



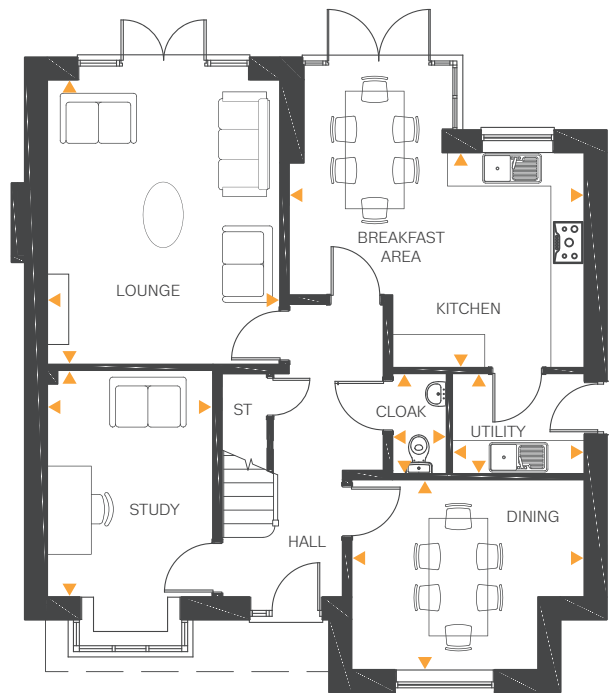
Hive smart heating system



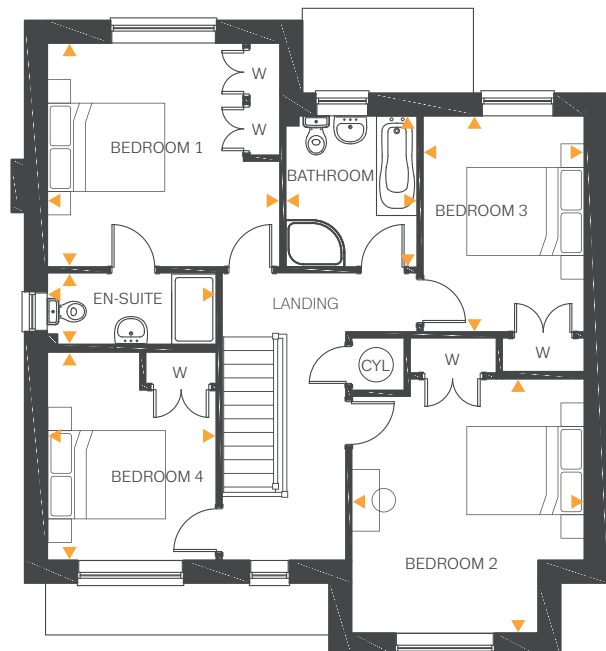
Fully turfed rear garden



Double garage



Ground Floor



First Floor

### Ground Floor

|                            |                 |               |
|----------------------------|-----------------|---------------|
| Lounge                     | 15'10" x 12'11" | 4.84m x 3.96m |
| Kitchen/<br>Breakfast Area | 16'5" x 12'0"   | 5.02m x 3.66m |
| Dining Room                | 12'11" x 10'7"  | 3.96m x 3.23m |
| Utility                    | 7'4" x 5'7"     | 2.25m x 1.71m |
| Study                      | 12'7" x 9'3"    | 3.86m x 2.82m |
| Cloakroom                  | 5'7" x 3'0"     | 1.71m x 0.92m |

### First Floor

|                       |                               |                                |
|-----------------------|-------------------------------|--------------------------------|
| Bedroom 1<br>En-suite | 13'0" x 12'6"<br>9'4" x 3'11" | 3.97m x 3.81m<br>2.87m x 1.20m |
| Bedroom 2             | 14'2" x 13'0"                 | 4.32m x 3.97m                  |
| Bedroom 3             | 12'0" x 8'11"                 | 3.67m x 2.74m                  |
| Bedroom 4             | 11'9" x 9'4"                  | 3.60m x 2.87m                  |
| Bathroom              | 8'5" x 7'3"                   | 2.57m x 2.23m                  |

All drawings, plans, and images are for illustrative purposes only. Room measurements are approximate. Finishes and layouts may vary and, during the construction process, plans might be subject to change. For more information, speak to your Sales Consultant.