

# THE SOLWAY

## THREE BEDROOM HOME



The Solway is an impressive home with plenty of living space spread across three perfectly laid out floors. On the ground floor you'll find a spacious lounge and a separate open plan dining kitchen with a glazed pod and French doors providing attractive views of the garden. In summer, you can throw the doors open and step outside for that family BBQ or a spot of al fresco dining.

To the first floor are two double bedrooms which offer plenty of choice whether you want to create a nursery, guest bedroom or home office. There is also a family bathroom with bath and separate shower cubicle.

The second floor is where you'll find the luxurious principal bedroom with walk-in wardrobe and en-suite.

Outside are turfed gardens, driveway and garage.

# THE SOLWAY

## THREE BEDROOM HOME



Lounge with bay window



Open plan dining kitchen with French doors to garden



Modern family bathroom with bath & separate shower



Private floor for principal bedroom with walk-in wardrobe & en-suite



High quality kitchen appliances



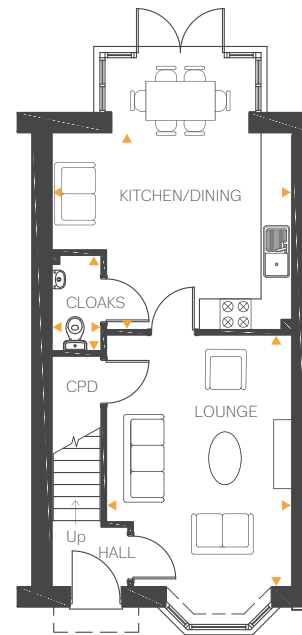
Hive smart heating system



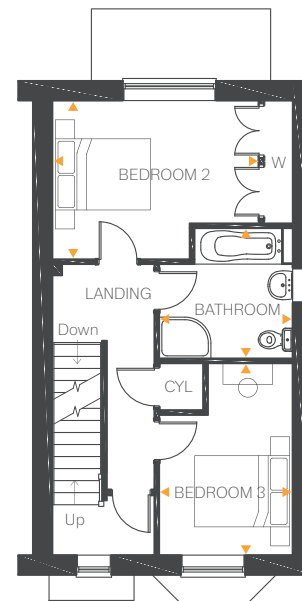
Fully turfed rear garden



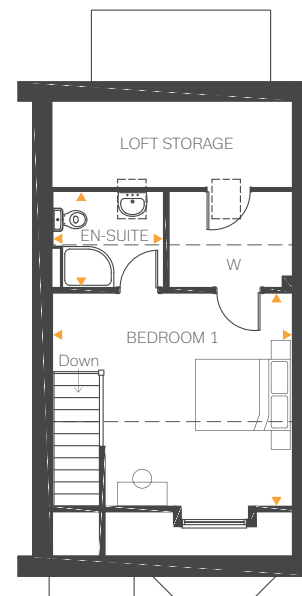
Driveway & garage



Ground Floor



First Floor



Second Floor

--- Area of reduced ceiling height.

### Ground Floor

Lounge	14'9" x 11'7"	4.52m x 3.54m
Kitchen/Dining	15'2" x 12'6"	4.64m x 3.82m
Cloakroom	6'4" x 3'3"	1.95m x 1.01m

### First Floor

Bedroom 2	13'1" x 10'0"	3.99m x 3.07m
Bedroom 3	12'2" x 8'3"	3.71m x 2.52m
Bathroom	8'4" x 8'3"	2.55m x 2.52m

### Second Floor

Bedroom 1	15'1" x 13'3"	4.60m x 4.04m
En-suite	7'2" x 6'11"	2.2m x 2.11m

All drawings, plans, and images are for illustrative purposes only. Room measurements are approximate. Finishes and layouts may vary and, during the construction process, plans might be subject to change. For more information, speak to your Sales Consultant.