

THE BLYTH

FOUR BEDROOM HOME



Computer generated images are for illustration purposes only.

The Blyth is a welcoming family home. Step inside and you'll find a bright ground floor comprising an open plan dining kitchen with French doors, perfect for stepping outside on relaxed summer weekends. There's also a spacious lounge with dual aspect windows, useful utility room and cloakroom.

Upstairs there's a luxurious principal bedroom with built-in wardrobes and en-suite, as well as three further bedrooms sharing a modern family bathroom.

Outside there is a turfed garden, driveway, and garage.

THE BLYTH

FOUR BEDROOM HOME



21ft dual aspect lounge



Open plan dining kitchen with French doors to garden



Downstairs cloakroom



Principal bedroom with built-in wardrobe & en-suite



High quality kitchen appliances



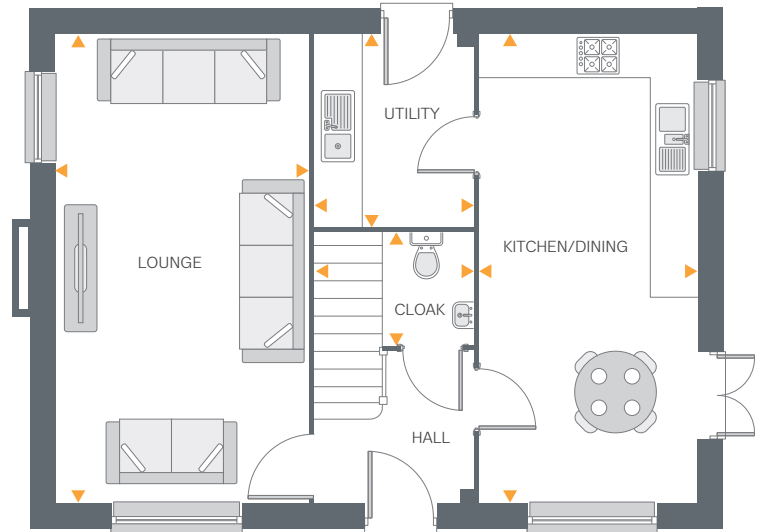
Hive smart heating system



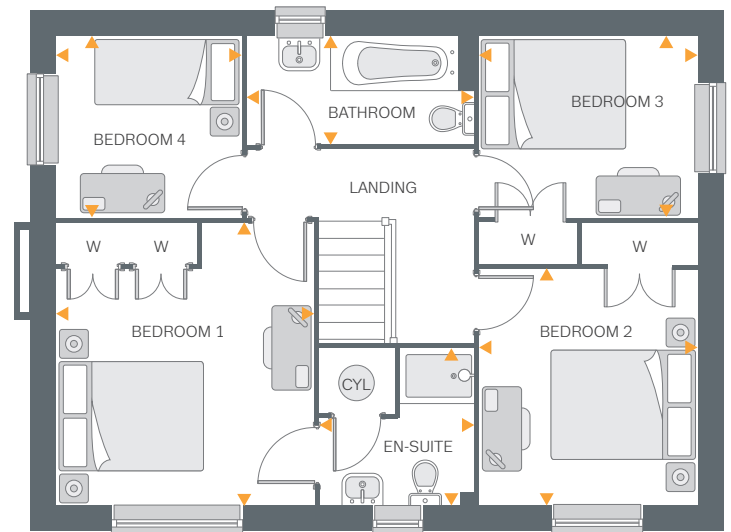
Fully turfed rear garden



Driveway & garage



Ground Floor



First Floor

Ground Floor

Lounge	21'3" x 11'4"	6.48m x 3.47m
Kitchen/Dining	21'3" x 9'7"	6.48m x 2.94m
Utility	8'7" x 7'0"	2.62m x 2.14m
Cloakroom	6'9" x 4'11"	2.08m x 1.51m

First Floor

Bedroom 1	12'8" x 11'6"	3.87m x 3.51m
En-suite	7'0" x 6'10"	2.15m x 2.10m
Bedroom 2	10'7" x 9'9"	3.23m x 2.98m
Bedroom 3	9'9" x 8'0"	2.98m x 2.46m
Bedroom 4	8'2" x 8'0"	2.51m x 2.46m
Bathroom	10'2" x 4'9"	3.10m x 1.46m