

# THE NENE

## THREE BEDROOM HOME



The Nene is a welcoming family home with an attractive front gable and porch.

Step inside and you'll find a bright ground floor, with an open plan dining kitchen and a spacious lounge, both looking out over the gardens. In the lounge we've also included French doors, perfect for stepping outside on relaxed summer weekends. There's also a useful utility room and cloakroom.

Upstairs, there's a luxurious principal bedroom with built-in wardrobe and en-suite, as well as two further bedrooms sharing a modern family bathroom.

Outside are turfed gardens, driveway and garage.

# THE NENE

## FOUR BEDROOM HOME



Lounge with French doors



Open plan dining kitchen



Downstairs cloakroom



Principal bedroom with built-in wardrobes & en-suite



High quality kitchen appliances



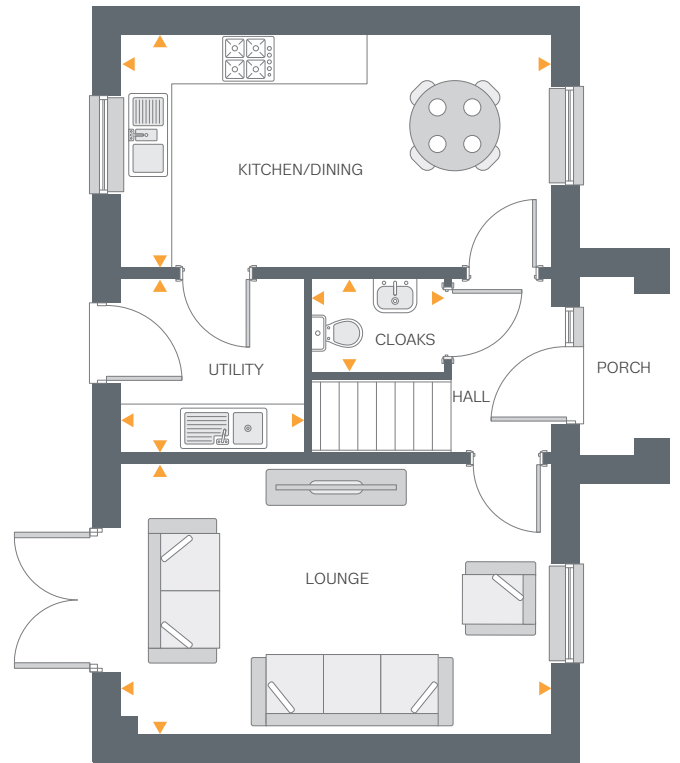
Hive smart heating system



Fully turfed rear garden



Driveway & garage



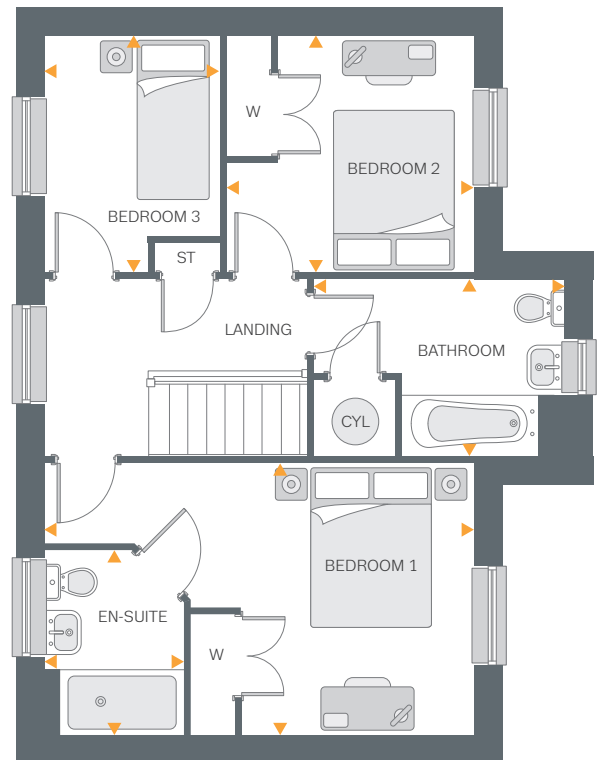
Ground Floor

### Ground Floor

Lounge	17'5" x 10'11"	5.31m x 3.33m
Kitchen/Dining	17'5" x 9'5"	5.31m x 2.89m
Utility	7'4" x 7'0"	2.25m x 2.15m
Cloakroom	5'4" x 3'8"	1.65m x 1.13m

### First Floor

Bedroom 1	17'5" x 11'1"	5.31m x 3.39m
Ensuite	7'6" x 5'6"	2.28m x 1.70m
Bedroom 2	10'0" x 9'7"	3.05m x 2.94m
Bedroom 3	9'7" x 7'1"	2.94m x 2.16m
Bathroom	10'2" x 7'1"	3.10m x 2.16m



First Floor