

THE SOAR

FOUR BEDROOM HOME



The Soar is a welcoming family home. Light pours in through the beautiful bay window in the lounge, creating a bright, airy space right at the heart of this spacious home. Step through the hallway and you'll find a generous open plan dining kitchen with French doors opening out onto the garden. It's a great space to eat, unwind and spend time together, inside or out. A useful utility room and cloakroom complete the ground floor.

To the first floor, the principal bedroom is a calm and relaxing space, with its own en-suite and built-in wardrobe. There are three further bedrooms which share a modern family bathroom. Any of the bedrooms could become the perfect home office space.

Outside there is a fully turfed garden, driveway and garage.

THE SOAR

FOUR BEDROOM HOME



Lounge with bay window



24ft open plan dining kitchen with French doors



Useful utility room



Principal bedroom with en suite



Built-in wardrobes in two bedrooms



High quality kitchen appliances



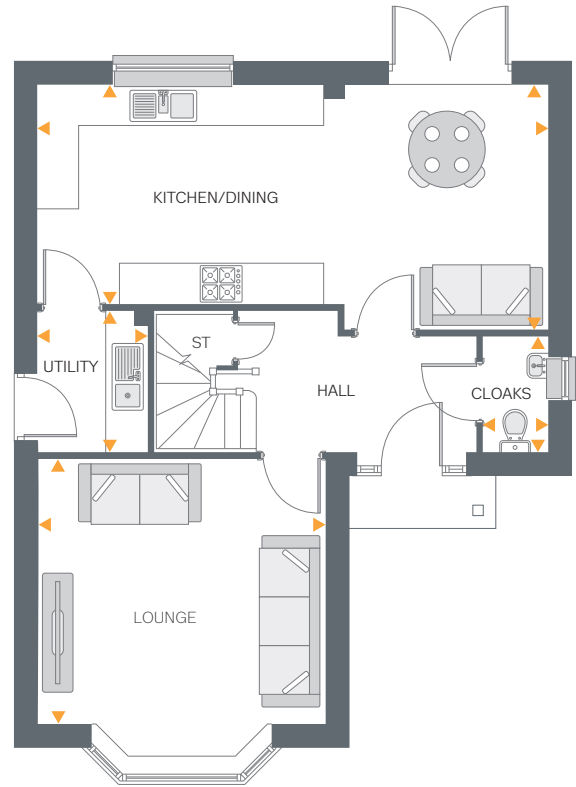
Hive smart heating system



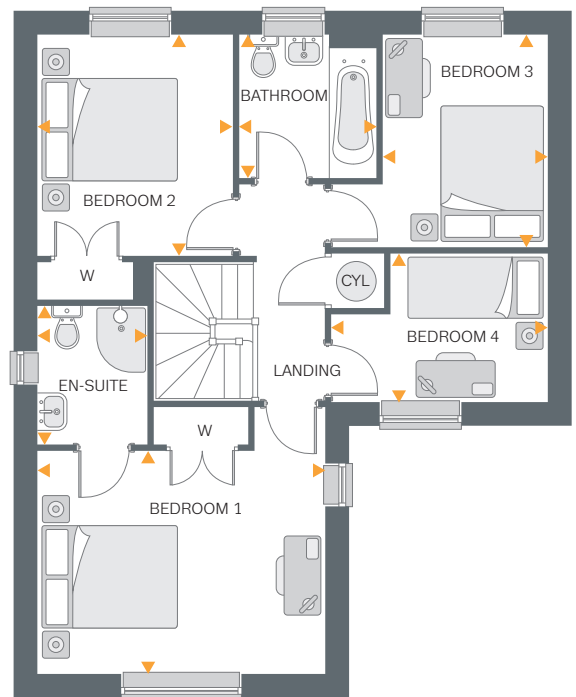
Fully turfed rear garden



Driveway & garage



Ground Floor



First Floor

Ground Floor

Lounge	14'1" x 12'9"	4.29m x 3.90m
Kitchen/Dining	24'9" x 11'6" (max) 9'11" (min)	7.56m x 3.52m (max) 3.03m (min)
Utility	6'11" x 5'3"	2.12m x 1.60m
Cloakroom	5'4" x 3'0"	1.65m x 0.93m

First Floor

Bedroom 1 En-suite	14'1" x 10'9" 7'0" x 5'3"	4.29m x 3.28m 2.15m x 1.61m
Bedroom 2	10'1" x 9'8"	3.08m x 2.95m
Bedroom 3	10'1" x 7'10"	3.09m x 2.40m
Bedroom 4	10'3" x 6'11"	3.14m x 2.12m
Bathroom	6'9" x 6'7"	2.07m x 2.01m