

THE HENMORE

THREE BEDROOM HOME



The Henmore is an impressive three bedroom home with plenty of living space spread across three perfectly laid out floors. On the ground floor you'll find a spacious lounge and open plan dining kitchen with a glazed pod and French doors providing attractive views of the garden.

To the first floor are two bedrooms, both with built-in wardrobes and one benefiting from its own en-suite. There is also a family bathroom with bath and separate shower cubicle. Both bedrooms offer plenty of choice whether you want to create a nursery, guest bedroom or home office.

The second floor is where you'll find the luxurious principal bedroom with walk-in wardrobe and en-suite.

Outside there is a fully turfed garden, driveway and garage.

THE HENMORE

THREE BEDROOM HOME



Open plan dining kitchen with French doors to garden



Downstairs cloakroom



Two en-suite bedrooms



Built-in wardrobes to all bedrooms



Private floor for principal bedroom with walk-in wardrobe & en-suite



High quality kitchen appliances



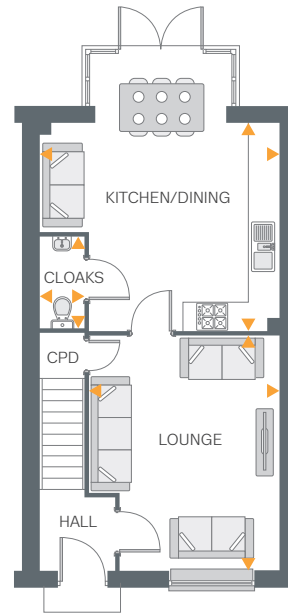
Hive smart heating system



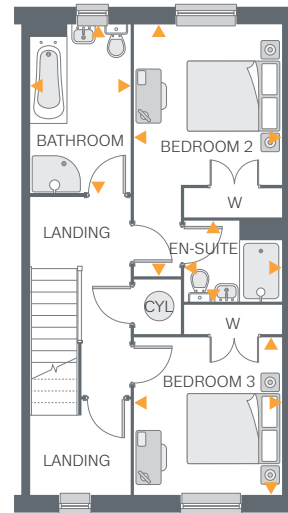
Fully turfed rear garden



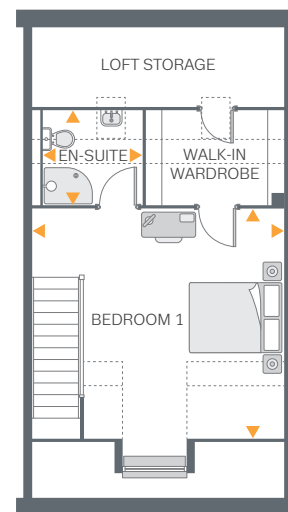
Driveway & garage



Ground Floor



First Floor



Second Floor

--- Area of reduced ceiling height.

Ground Floor

| | | |
|----------------|----------------|---------------|
| Lounge | 15'10" x 12'9" | 4.85m x 3.90m |
| Kitchen/Dining | 16'2" x 14'0" | 4.93m x 4.29m |
| Cloakroom | 6'2" x 3'0" | 1.90m x 0.93m |

First Floor

| | | |
|-----------|--------------|---------------|
| Bedroom 2 | 16'2" x 9'5" | 4.93m x 2.88m |
| En-suite | 6'2" x 5'1" | 1.89m x 1.57m |
| Bedroom 3 | 10'0" x 9'5" | 3.07m x 2.88m |
| Bathroom | 10'9" x 6'4" | 3.29m x 1.94m |

Second Floor

| | | |
|-----------|---------------|---------------|
| Bedroom 1 | 16'0" x 15'1" | 4.88m x 4.61m |
| En-suite | 6'4" x 6'0" | 1.94m x 1.85m |

All drawings, plans, and images are for illustrative purposes only. Room measurements are approximate. Finishes and layouts may vary and, during the construction process, plans might be subject to change. For more information, speak to your Sales Consultant.