

THE SOAR

FOUR BEDROOM HOME



The Soar is a welcoming family home. Light pours in through the beautiful bay window in the lounge, creating a bright, airy space right at the heart of this spacious home. Step through the hallway and you'll find a generous open plan dining kitchen with French doors opening out onto the garden. It's a great space to eat, unwind and spend time together, inside or out. A useful utility room and cloakroom complete the ground floor.

To the first floor, the principal bedroom is a calm and relaxing space, with its own en-suite and built-in wardrobe. There are three further bedrooms which share a modern family bathroom. Any of the bedrooms could become the perfect home office space.

Outside there is a fully turfed garden, driveway and garage.

THE SOAR

FOUR BEDROOM HOME



Lounge with bay window



24ft open plan dining kitchen with French doors



Useful utility & downstairs cloakroom



Principal bedroom with en suite



Built-in wardrobes in two bedrooms



High quality kitchen appliances



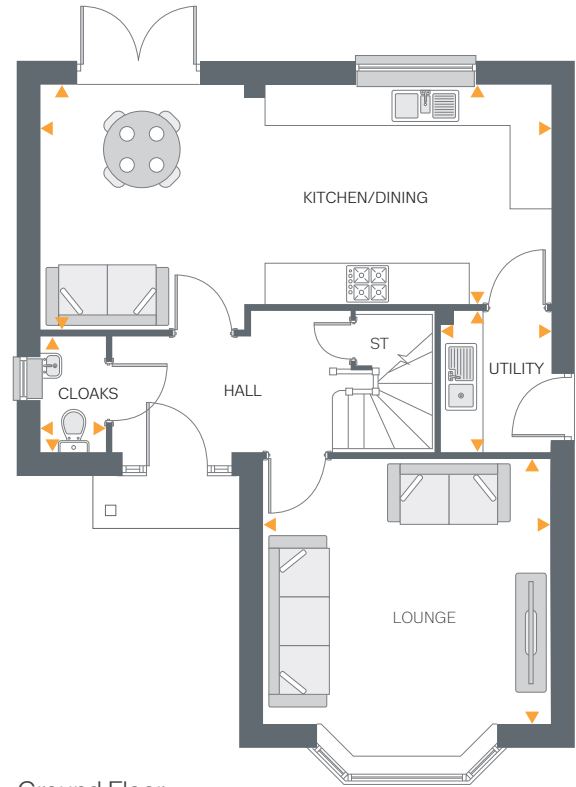
Hive smart heating system



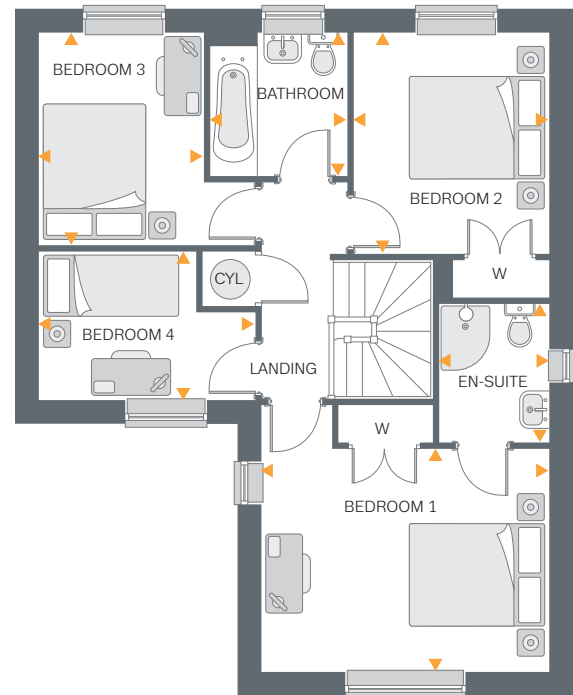
Fully turfed rear garden



Driveway & garage



Ground Floor



First Floor

Ground Floor

Lounge	14'1" x 12'9"	4.29m x 3.90m
Kitchen/Dining	24'9" x 11'6" (max) 9'11" (min)	7.56m x 3.52m (max) 3.03m (min)
Utility	6'11" x 5'3"	2.12m x 1.60m
Cloakroom	5'4" x 3'0"	1.65m x 0.93m

First Floor

Bedroom 1 En-suite	14'1" x 10'9" 7'0" x 5'3"	4.29m x 3.28m 2.15m x 1.61m
Bedroom 2	10'1" x 9'8"	3.08m x 2.95m
Bedroom 3	10'1" x 7'10"	3.09m x 2.40m
Bedroom 4	10'3" x 6'11"	3.14m x 2.12m
Bathroom	6'9" x 6'7"	2.07m x 2.01m