

The Stratford

4-bedroom detached home

Family living made simple. The Stratford is a contemporary home with a traditional exterior and practical layout. The utility room, hall and cloakroom make up the ground floor with the combined kitchen and family dining area and separate lounge. The latter has French doors which open out to a beautiful private garden, ideal for all those times when you want to bring the fresh air into your home or enjoy some outside space.

Upstairs three bedrooms share a family bathroom with bathtub, while the large principle bedroom benefits from its own en-suite shower and built-in wardrobes. With four well-proportioned bedrooms in total, you might prefer to turn one of them into the private home office you've always wanted.



Features

- Open-plan kitchen and dining area
- Separate spacious lounge looking out onto rear garden
- Cloakroom, family bathroom with bathtub, and principle bedroom en-suite shower
- Private garden reached through French doors
- High quality Smeg kitchen appliances
- Built-in wardrobes in three rooms
- HIVE smart home system
- Garage

Room Dimensions

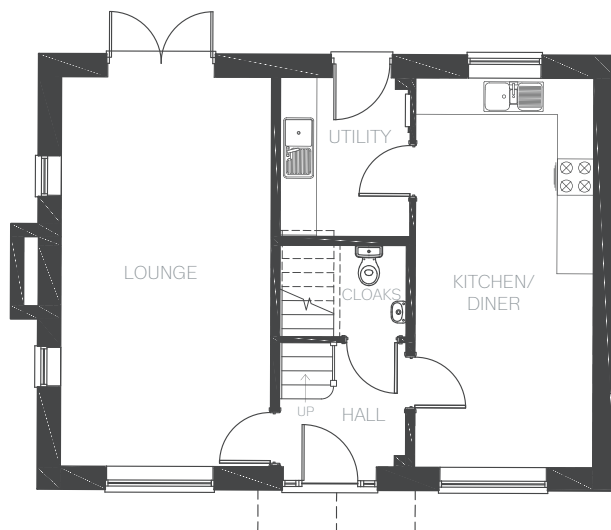
Ground Floor

LOUNGE	3470mm x 6435mm	11'4" x 21'1"
KITCHEN / DINER	2942mm x 6435mm	9'7" x 21'1"
UTILITY	2143mm x 2633mm	7'0" x 8'7"
CLOAKROOM	2086mm x 1520mm	6'10" x 4'11"

First Floor

BEDROOM 1 EN-SUITE	3517mm x 3879mm	11'6" x 12'8"
BEDROOM 2	2989mm x 3236mm	9'9" x 10'7"
BEDROOM 3	2989mm x 2463mm	9'9" x 8'0"
BEDROOM 4	2519mm x 2463mm	8'3" x 8'0"
BATHROOM	3080mm x 1448mm	10'1" x 4'9"

Ground Floor



First Floor

