

The Medway

4-bedroom detached home

A driveway bordered by a neat lawn leads to the double garage of The Medway, providing ample off-street parking for this traditional-looking home. Inside the house a front-facing study, open plan kitchen and dining area, and a large lounge with French doors to the garden provide lots of space for the family to spend time together. The family bathroom and four bedrooms, including a master bedroom with an en-suite shower, are found up the stairs on the first floor.



Features

- Open plan kitchen and dining area
- Separate lounge opening out onto garden
- High quality Smeg kitchen appliances
- Stainless steel integrated oven, 5-ring hob and chimney hood extractor fan
- Additional front facing study
- Cloakroom, family bathroom with bathtub, and master en-suite shower
- Landscaped garden reached through French doors
- Built-in wardrobes in all bedrooms
- Double garage

Room Dimensions

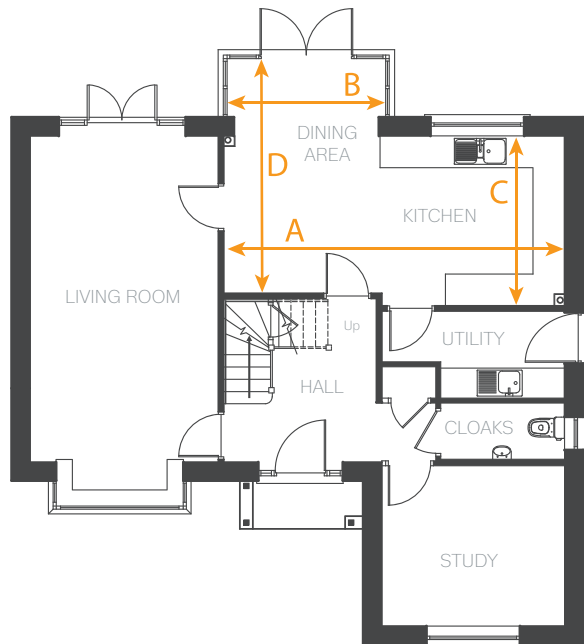
Ground Floor

LOUNGE	6115(+ bay) x 3510 mm	20'0" x 11'6"
KITCHEN / DINING		
ARROW A	6394 mm	20'11"
ARROW B	2970 mm	9'8"
ARROW C	3161 mm	10'4"
ARROW D	4420 mm	14'6"
STUDY	3407 x 3002 mm	11'2" x 9'10"
UTILITY	2314 (min) x 1616 mm	7'7" x 5'3"
CLOAKROOM	2314 x 1050 mm	7'7" x 3'6"

First Floor

BEDROOM 1	4349 x 3407 mm	14'3" x 11'2"
EN-SUITE (BED 1)	1970 x 1690 mm	6'5" x 5'6"
BEDROOM 2	2975 x 2934 mm	9'9" x 9'7"
BEDROOM 3	3382 x 2970 mm	11'1" x 9'8"
BEDROOM 4	3037 x 2927 mm	9'11" x 9'7"
BATHROOM	3539(max) x 1963(max) mm 2596(min)	11'7" x 6'5" 8'6"

Ground Floor



First Floor

