

The Rannoch

4-bedroom semi-detached home

In The Rannoch, a short porch opens onto an entrance hall leading to a cloakroom, lounge, and kitchen area; both the lounge and kitchen have French doors opening onto the garden, which gives the floor a light and airy feel. Upstairs are the family bathroom and four bedrooms, including a master bedroom that faces the rear garden and boasts its own en-suite shower.



Features

- Open plan kitchen and dining area looking out onto rear garden
- Separate lounge looking out on rear garden
- Cloakroom, family bathroom, and master en-suite shower
- Landscaped garden reached through French doors
- High quality Smeg kitchen appliances
- Stainless steel integrated oven, 5-ring hob and chimney hood extractor fan
- Built-in wardrobes in some bedrooms
- Single garage and car port

Room Dimensions

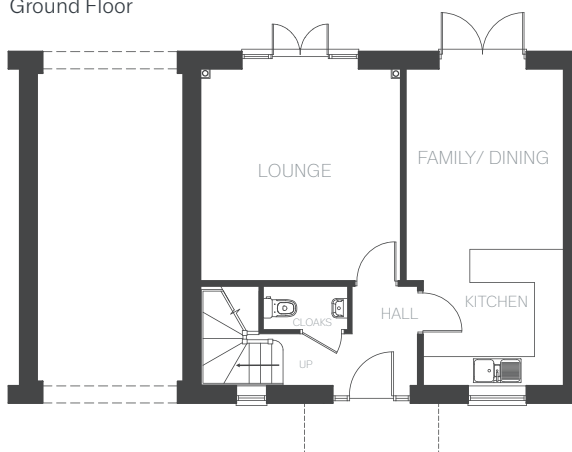
Ground Floor

LOUNGE	4301 x 4060 mm	14'1" x 13'3"
KITCHEN FAMILY/DINING	6450 x 3190 mm (max) 2840 mm (min)	21'1" x 10'5" 9'3"
CLOAKROOM	1715 x 861 mm	5'7" x 2'9"

First Floor

BEDROOM 1 EN-SUITE	4354 (max) x 3200 (max) mm 2395 x 1190 mm	14'3" x 10'6" 7'10" x 3'10"
BEDROOM 2	3361 (min) x 3147 (max) mm	11'0" x 10'3"
BEDROOM 3	3070 x 3200 mm	10'0" x 10'6"
BEDROOM 4	3147 (max) x 3200 (max) mm 2065 (min) mm	10'3" x 10'6" 6'9"
BATHROOM	3288 x 1795 mm	10'9" x 5'10"

Ground Floor



First Floor

