

The Whitendale

4-bedroom detached home

A large, open plan kitchen, family and dining area with French doors opening out to a landscaped garden is the focal point of The Whitendale, a four-bedroom family home perfect for growing families.

Downstairs a separate lounge, study, utility and cloakroom complement the family living area.



Features

- Open plan kitchen and breakfast area opening out on rear garden
- Separate dining and living room
- Cloakroom, family bathroom, and master en suite
- Landscaped garden reached through French doors
- Stainless steel integrated double oven, hob and extractor fan
- Built-in wardrobes in all bedrooms
- Garage

Room Dimensions

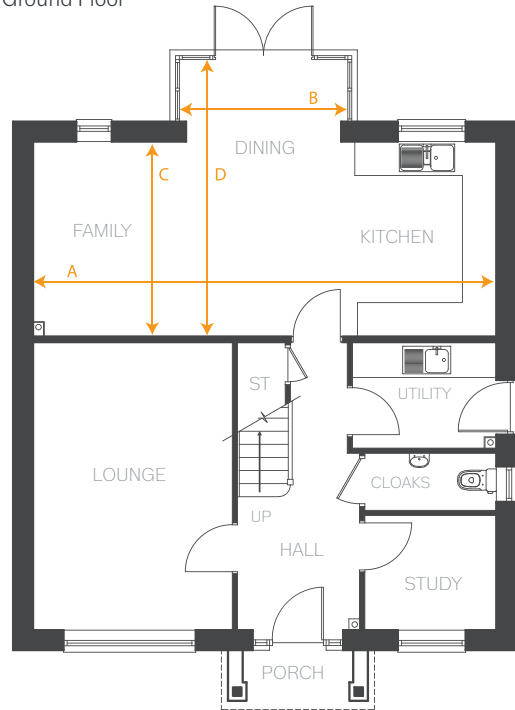
Ground Floor

LOUNGE	5048 x 3497 mm	16'6" x 11'5"
STUDY	2297 x 2000 mm	7'6" x 6'6"
KITCHEN/DINING/ FAMILY		
ARROW A	8150 mm	26'8"
ARROW B	2970 mm	9'8"
ARROW C	3402 mm	11'1"
ARROW D	4867 mm	15'11"
UTILITY	2514 x 1845 mm	8'2" x 6'0"
CLOAKROOM	2297 x 997 mm	7'6" x 3'3"

First Floor

BEDROOM 1	3940 x 3497 mm	12'11" x 11'5"
EN-SUITE	1894 x 1470 mm	6'2" x 4'9"
BEDROOM 2	3497 x 3264 mm	11'5" x 10'8"
EN-SUITE	2504 x 1190 mm	8'2" x 3'10"
BEDROOM 3	3907 x 2120 mm	12'9" x 6'11"
BEDROOM 4	3097 x 2553 mm	10'1" x 8'4"
BATHROOM	2553(max) x 2446(max) mm	8'4" x 8'0"

Ground Floor



First Floor

