



# The Dee

---

## 3 bedroom home

A covered porch and hallway welcome you into the pretty three bedroom home, where you have access to a spacious lounge with dual aspect windows, filling the space with light and an open plan dining kitchen which benefits from having French doors that open out onto the garden. A separate utility room provides extra storage and a downstairs cloakroom completes the ground floor.

Upstairs you'll find a luxurious principal bedroom with built-in wardrobe and en-suite and two further bedrooms sharing a modern family bathroom with bath and separate shower.



## Features

- Open plan dining kitchen with French doors to garden
- 17ft lounge
- Separate utility room
- Principal bedroom with built-in wardrobe & en-suite
- High quality Smeg kitchen appliances
- Hive smart heating system
- Turfed rear garden
- Garage

## Room Dimensions

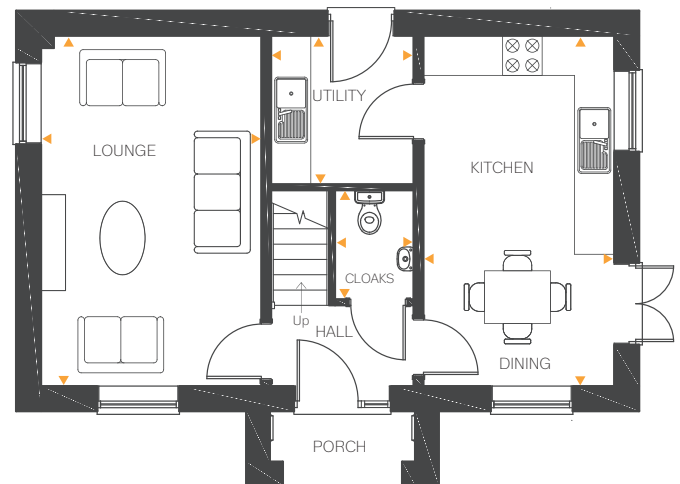
### Ground Floor

Lounge	17'6" x 11'0"	5.35m x 3.37m
Kitchen/Dining	17'6" x 9'8"	5.35m x 2.95m
Utility	7'4" x 6'7"	2.25m x 2.03m
Cloakroom	5'5" x 3'5"	1.66m x 1.06m

### First Floor

Bedroom 1	17'6" (max) x 11'2" (max) 9'7" (min) x 6'1" (min)	5.35m (max) x 3.42m (max) 2.93m (min) x 1.85m (min)
En-suite	7'6" x 5'5"	2.28m x 1.67m
Bedroom 2	10'1" x 9'7"	3.08m x 2.92m
Bedroom 3	9'7" x 7'1"	2.92m x 2.17m
Bathroom	10'1" x 6'11"	3.09m x 2.11m

Ground Floor



First Floor

