



# The Nene

---

## 3 bedroom home

The Nene is a welcoming family home with an attractive front gable and porch. Step inside and you'll find a bright ground floor, with an open plan dining kitchen and a spacious lounge, both looking out over the gardens. In the lounge we've also included French doors, perfect for stepping outside on relaxed summer weekends. There's also a useful utility room and downstairs cloakroom.

Upstairs, there's a luxurious principal bedroom with built-in wardrobe and en-suite, as well as two further bedrooms sharing a modern family bathroom.



## Features

- 17ft lounge with French doors to garden
- Open plan dining kitchen
- Useful utility room
- Principal bedroom with built in-wardrobe & en-suite
- Built-in wardrobe to bedroom two
- High quality Smeg kitchen appliances
- Hive smart heating system
- Fully turfed rear garden
- Garage

## Room Dimensions

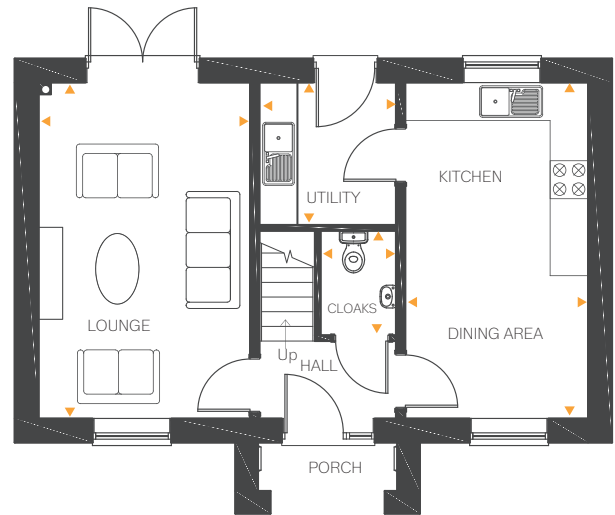
### Ground Floor

Lounge	17'6" x 11'0"	5.35m x 3.37m
Kitchen/Dining	17'6" x 9'8"	5.35m x 2.95m
Utility	7'4" x 6'7"	2.25m x 2.03m
Cloakroom	5'5" x 3'5"	1.66m x 1.06m

### First Floor

Bedroom 1	17'6" (max) x 11'2" (max) 9'7" (min) x 6'1" (min)	5.35m (max) x 3.42m (max) 2.93m (min) x 1.85m (min)
En-suite	7'6" x 5'5"	2.28m x 1.67m
Bedroom 2	10'1" x 9'7"	3.08m x 2.92m
Bedroom 3	9'7" x 7'1"	2.92m x 2.17m
Bathroom	10'1" x 6'11"	3.09m x 2.11m

Ground Floor



First Floor

