



The Soar

4 bedroom home

Light pours in through the Soar's beautiful bay window, creating a bright, airy space right at the heart of this spacious four bedroom family home. Step through the hallway and you'll find a generous open plan dining kitchen with French doors opening out onto the garden. It's a great space to eat, unwind and spend time together, inside or out. A useful utility room and cloakroom complete the ground floor.

To the first floor, the principal bedroom is a calm and relaxing space, with its own en-suite and built-in wardrobe. There are three further bedrooms which share a modern family bathroom. Any of the bedrooms could become the perfect home office space.



Features

- 24ft open plan dining kitchen with French doors
- Lounge with bay window
- Utility room
- Principal bedroom with en suite
- Built-in wardrobes in two bedrooms
- High quality Smeg kitchen appliances
- Hive smart heating system
- Fully turfed rear garden
- Garage

Room Dimensions

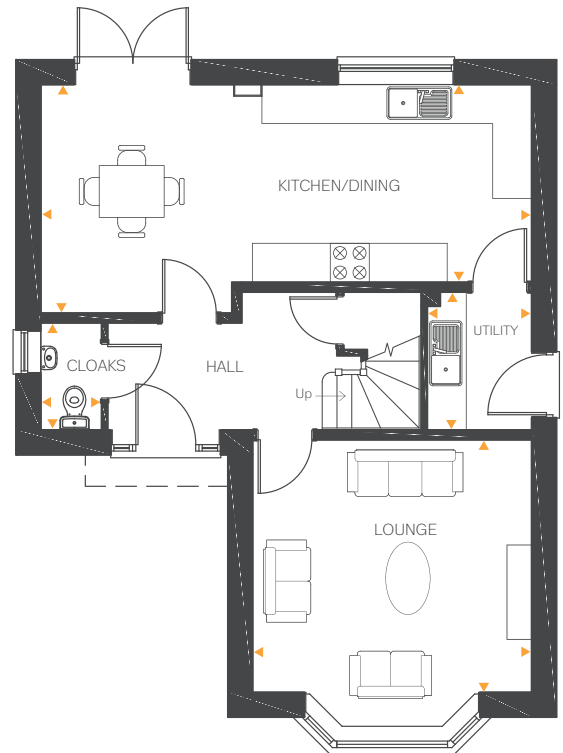
Ground Floor

Lounge	13'8" x 12'7"	4.18m x 3.84m
Kitchen/Dining	24'5" x 11'7" (max) 10'4" (min)	7.45m x 3.55m (max) 3.17m (min)
Utility	6'7" x 5'2"	2.02m x 1.59m
Cloakroom	5'4" x 3'0"	1.65m x 0.93m

First Floor

Bedroom 1	13'8" x 10'8"	4.17m x 3.25m
En-suite	6'8" x 5'2"	2.03m x 1.59m
Bedroom 2	10'7" x 9'4"	3.22m x 2.84m
Bedroom 3	10'2" x 7'10"	3.10m x 2.40m
Bedroom 4	10'4" x 7'0"	3.15m x 2.15m
Bathroom	6'10" x 6'7"	2.08m x 2.01m

Ground Floor



First Floor

