



# The Solent

---

## 4 bedroom home

The Solent is a spacious family home with a traditional look and practical layout. Step through the hallway and into a spacious open plan dining kitchen with views to the front and rear, you'll also find a generous lounge with French doors leading onto the garden, perfect for summers at home. A useful utility room and cloakroom complete the ground floor.

To the first floor are four good sized bedrooms and a modern family bathroom. The principal bedroom includes built-in wardrobes and it's own en-suite. Any of the bedrooms could easily be transformed into the peaceful home office you've always wanted.



## Features

- 21ft lounge with French doors to garden
- Open plan dining kitchen
- Useful utility room
- Principal bedroom with en-suite
- Built in wardrobes in three bedrooms
- High quality Smeg kitchen appliances
- Hive smart heating system
- Fully turfed rear garden
- Garage

## Room Dimensions

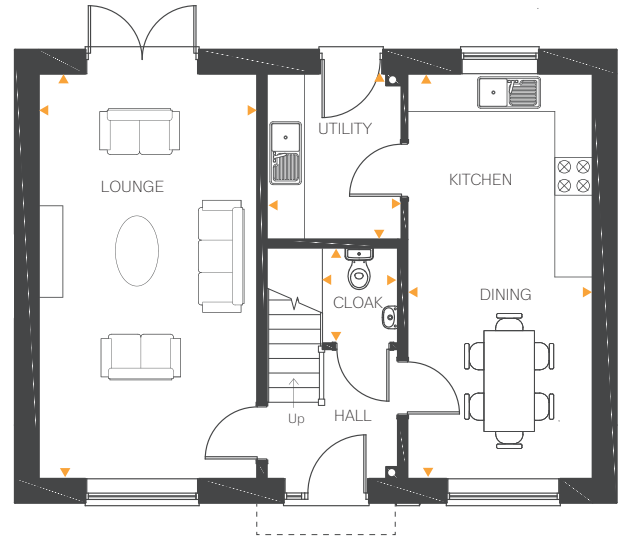
### Ground Floor

Lounge	21'1" x 11'4"	6.45m x 3.47m
Kitchen/Dining	21'1" x 9'7"	6.45m x 2.94m
Utility	8'9" x 6'8"	2.68m x 2.03m
Cloakroom	6'8" x 5'1" (with part sloping ceiling)	2.03m x 1.55m

### First Floor

Bedroom 1	12'9" x 11'6"	3.89m x 3.52m
En-suite	7'4" x 6'9"	2.25m x 2.06m
Bedroom 2	10'7" x 9'9"	3.25m x 2.97m
Bedroom 3	9'9" x 8'0"	2.97m x 2.46m
Bedroom 4	8'3" x 8'0"	2.53m x 2.46m
Bathroom	10'0" x 4'9"	3.05m x 1.47m

Ground Floor



First Floor

