



The Stonethwaite

5 bedroom home

The Stonethwaite is a stunning five bedroom family home set across three storeys. On the ground floor is an impressive open plan dining kitchen which includes a central island and family area with two sets of French doors leading out onto the garden. With room to cook, eat and relax, it's a beautiful space to enjoy together. You'll also find an inviting lounge, separate study, useful utility room and cloakroom.

To the first floor, are four bedrooms, three of which include built-in wardrobes and bedroom two has it's own en-suite. There's also a modern family bathroom which includes a bath and separate shower cubicle.

The second floor is where you'll find the luxurious principal bedroom with built-in wardrobes, en-suite and extra storage space.



Features

- Open plan kitchen & dining area with two sets of French doors leading to garden
- Inviting lounge
- Study/home office
- Useful utility room
- Private floor for principal bedroom with built-in wardrobes & en-suite
- En-suite to bedroom two
- High quality Smeg kitchen appliances
- Hive smart home system
- Fully turfed garden
- Double garage

Room Dimensions

Ground Floor

Kitchen/Diner	27'4" x 11'9" (max) 11'4" (min)	8.35m x 3.58m (max) 3.47m (min)
Lounge	16'11" x 11'1"	5.17m x 3.40m
Study	9'5" x 8'3"	2.88m x 2.52m
Utility	8'3" x 6'10"	2.52m x 2.09m
Cloaks	5'10" x 2'9"	1.79m x 0.85m

First Floor

Bedroom 2	11'10" x 11'9"	3.61m x 3.58m
En-suite	9'1" x 4'4"	2.78m x 1.33m
Bedroom 3	15'8" x 11'1"	4.78m x 3.40m
Bedroom 4	11'6" x 11'3"	3.51m x 3.43m
Bedroom 5	8'4" x 8'2"	2.55m x 2.49m
Bathroom	8'4" x 8'1"	2.55m x 2.47m

Second Floor

Principal Bedroom	22'1" (max) x 15'7" 11'3" (min)	6.73m (max) x 4.76m 3.43m (min)
En-suite	8'2" x 4'9"	2.49m x 1.44m

--- Area of reduced ceiling height

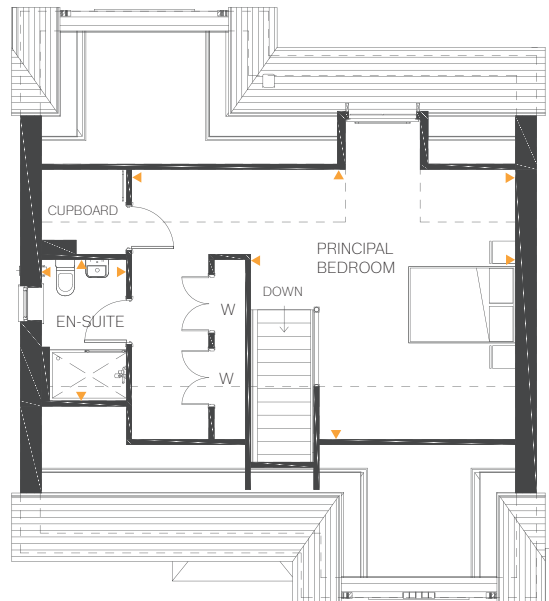
Ground Floor



First Floor



Second Floor



All drawings, plans, and images are for illustrative purposes only. Room measurements are approximate. Finishes and layouts may vary and, during the construction process, plans might be subject to change. For more information, speak to your sales consultant.