



The Alcester

2 bedroom home

As you step through the front door of the Alcester and enter the hallway, you'll find an inviting lounge leading into a contemporary dining kitchen with door to a fully turfed garden, creating a lovely light and bright space whether you're cooking or hosting a dinner party.

Upstairs on the first floor are two good sized bedrooms, both with built-in wardrobes, and a modern fitted bathroom.



Features

- Open plan dining kitchen with door to garden
- Downstairs cloakroom
- Two double bedrooms
- Built-in wardrobes
- High quality Smeg kitchen appliances
- Hive smart home system
- Turfed garden to rear

Room Dimensions

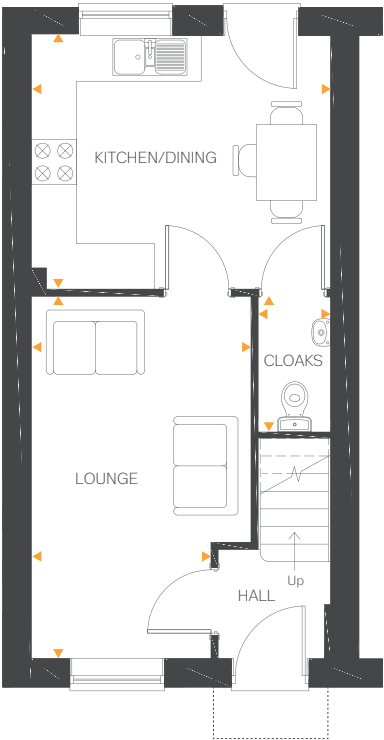
Ground Floor

Lounge	15'8" x 9'8" (max) 7'9" (min)	4.79m x 2.95m (max) 2.37m (min)
Kitchen/Dining	12'11" x 10'11"	3.96m x 3.35m
Cloakroom	5'10" x 2'11"	1.79m x 0.91m

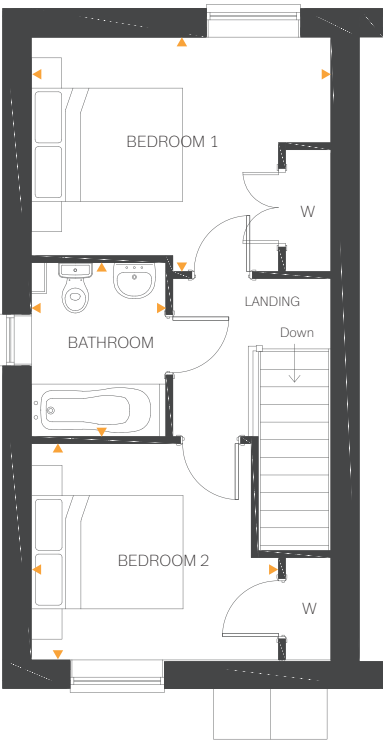
First Floor

Bedroom 1	12'11" x 10'2"	3.96m x 3.10m
Bedroom 2	10'8" x 9'4"	3.26m x 2.85m
Bathroom	7'6" x 5'10"	2.30m x 1.77m

Ground Floor



First Floor



All drawings, plans, and images are for illustrative purposes only. Room measurements are approximate. Finishes and layouts may vary and, during the construction process, plans might be subject to change. For more information, speak to your sales consultant.