



The Harborough

5 bedroom home

An impressive kitchen, breakfast and family area is the focal point of the Harborough, where you can throw open the French doors and walk out onto your garden and enjoy your own private outdoor space. The spacious lounge and separate dining room, both with feature bay windows, offer even more room for your family to enjoy. There is also the benefit of a cloakroom and useful utility room with door leading to the side of the property.

To the first floor you will find the principal bedroom with triple built-in wardrobes and en-suite, two further bedrooms with built-in wardrobes and a family bathroom with bath and separate shower cubicle. The second floor benefits from two further bedrooms, useful storage space and a shower room.



Features

- Spacious open plan kitchen, dining and family area with French doors to garden
- Lounge with feature bay window and separate dining room/study
- Useful utility room and cloakroom
- 20'6ft principal bedroom with triple built-in wardrobes and en-suite
- Two further bedrooms with built-in wardrobes to first floor and family bathroom
- Second floor with two bedrooms, storage space and shower room
- High quality Smeg kitchen appliances
- Hive smart home system
- Private rear turfed garden

Room Dimensions

Ground Floor

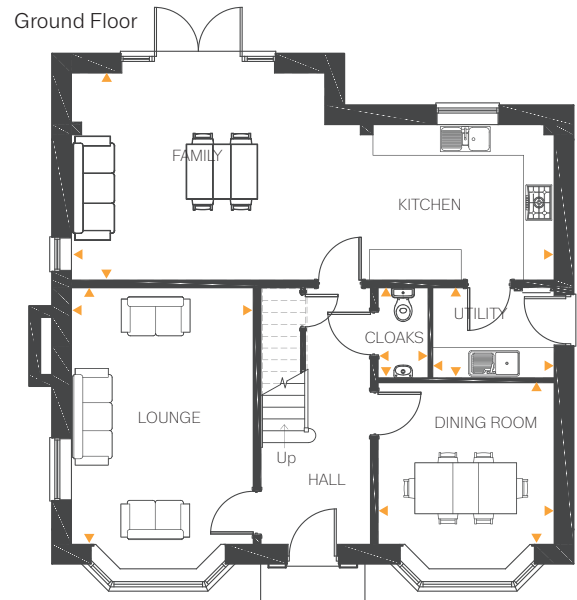
Family/Kitchen	31'1" x 13'3"	9.47m x 4.06m
Lounge	16'6" x 11'8"	5.03m x 3.56m
Dining Room	11'4" x 10'6"	3.45m x 3.21m
Utility	7'9" x 5'7"	2.38m x 1.72m
Cloaks	5'7" x 3'2"	1.72m x 0.98m

First Floor

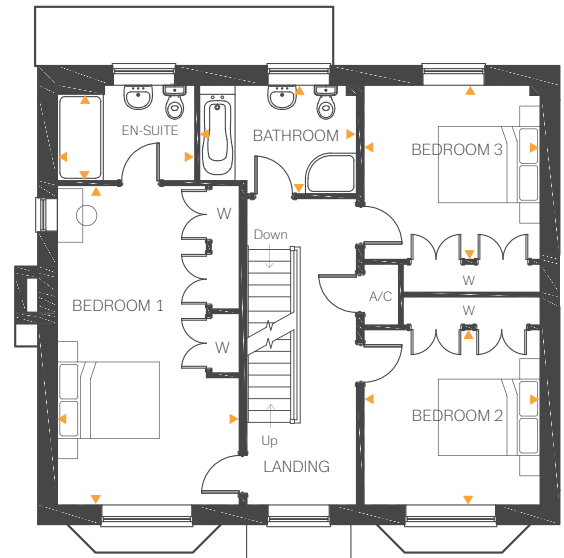
Bedroom 1	20'6" x 11'8"	6.26m x 3.56m
En-suite	8'10" x 6'1"	2.69m x 1.87m
Bedroom 2	11'4" x 11'3"	3.45m x 3.43m
Bedroom 3	11'4" x 11'2"	3.45m x 3.41m
Bathroom	10'1" x 6'11"	3.07m x 2.13m

Second Floor

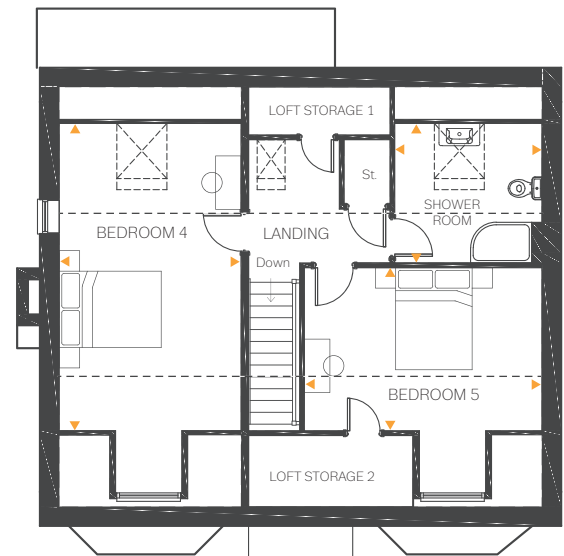
Bedroom 4	19'9" x 11'7"	6.03m x 3.55m
Bedroom 5	15'2" x 10'5"	4.63m x 3.20m
Shower Room	9'4" x 8'11"	2.86m x 2.74m



First Floor



Second Floor



Area of reduced ceiling height