

# The Solent

---

## 4-bedroom detached home

The Solent is a contemporary home with a traditional exterior and practical layout.

The utility room, hall and cloakroom make up the ground floor with the combined kitchen and dining area and separate lounge, which has French doors opening out to a beautifully landscaped garden. Upstairs three bedrooms share a family bathroom with bathtub, while the large master bedroom benefits from its own en-suite and built-in wardrobe.



# Features

- Open plan kitchen and dining area
- Separate spacious lounge looking out onto rear garden
- Cloakroom, family bathroom with bathtub, and master en-suite
- Landscaped garden reached through French doors
- Stainless steel integrated double oven, hob and extractor fan
- Built-in wardrobes in some bedrooms
- Garage

# Room Dimensions

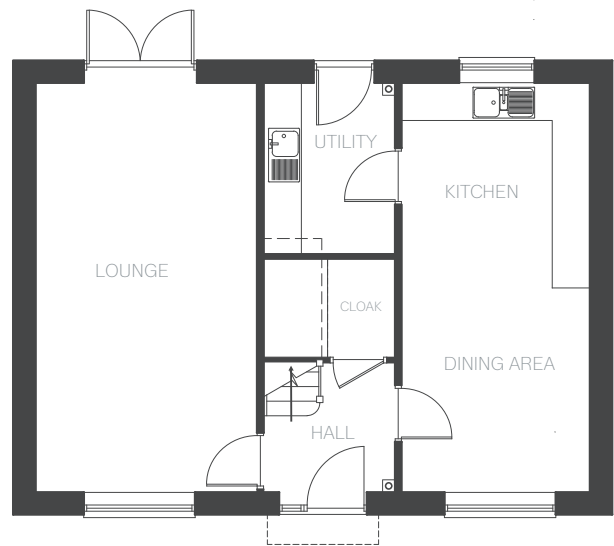
## Ground Floor

LOUNGE	6450 x 3470 mm	21'1" x 11'4"
KITCHEN/DINING	6450 x 2942 mm	21'1" x 9'7"
UTILITY	2680 x 2038 mm	8'9" x 6'8"
CLOAKROOM	1540 x 2038mm (with part sloping ceiling)	5'0" x 6'8"

## First Floor

BEDROOM 1	3522(max) x 3889(max) mm 3273(min)mm	11'6" x 12'9" 10'8"
EN-SUITE	2052(max) x 2253(max) mm 1360(min) mm	6'8" x 7'4" 4'5"
BEDROOM 2	3246(min) x 2970 mm	10'7" x 9'8"
BEDROOM 3	2458 x 2970 mm	8'0" x 9'8"
BEDROOM 4	2458 x 2529 mm	8'0" x 8'3"
BATHROOM	3045 x 1465 mm	9'11" x 4'9"

Ground Floor



First Floor

