



The Wye

3 bedroom home

Step inside the Wye and you'll find an inviting lounge and open plan dining kitchen with French doors to the turfed rear garden, it's a light, bright, comfortable space, whether you're cooking for the family or hosting friends. A useful cloakroom finishes off the ground floor.

Upstairs feels just as light and bright. There is a spacious principal bedroom with en-suite and built-in wardrobes, two further bedrooms and a modern family bathroom.

Outside there is a fully turfed garden and off road parking.



Features

- *Inviting lounge*
- *Open plan dining kitchen with French doors to garden*
- *Downstairs cloakroom*
- *Principal bedroom with en-suite & built-in wardrobes*
- *High quality kitchen appliances*
- *Hive smart heating system*
- *Fully turfed rear garden*

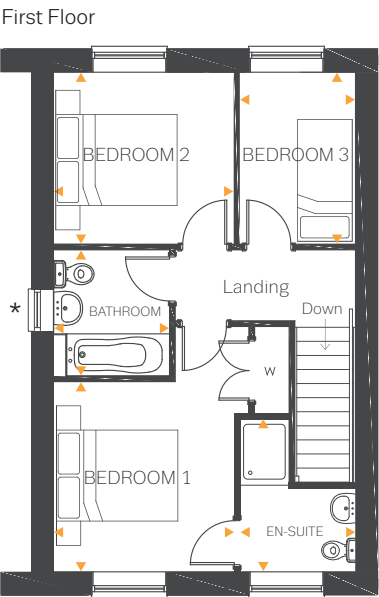
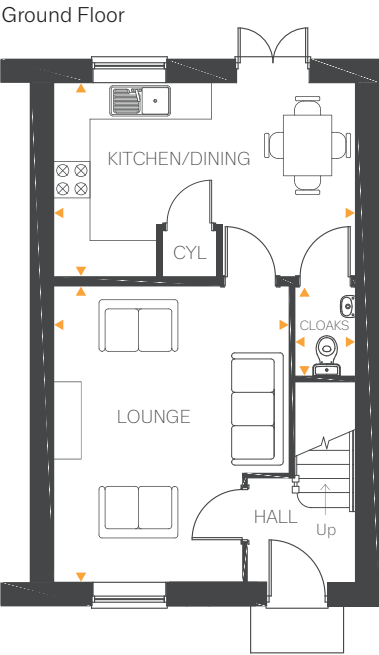
Room Dimensions

Ground Floor

Lounge	16'0" x 12'11"	4.88m x 3.95m
Kitchen/Dining	16'3" x 10'5"	4.97m x 3.20m
Cloakroom	5'3" x 3'0"	1.61m x 0.93m

First Floor

Bedroom 1	10'3" x 10'0"	3.13m x 3.05m
En-suite	8'6" x 5'11"	2.61m x 1.82m
Bedroom 2	9'8" x 9'3"	2.97m x 2.83m
Bedroom 3	9'3" x 6'3"	2.83m x 1.91m
Bathroom	6'9" x 6'3"	2.07m x 1.91m



*Window included on selected plots.